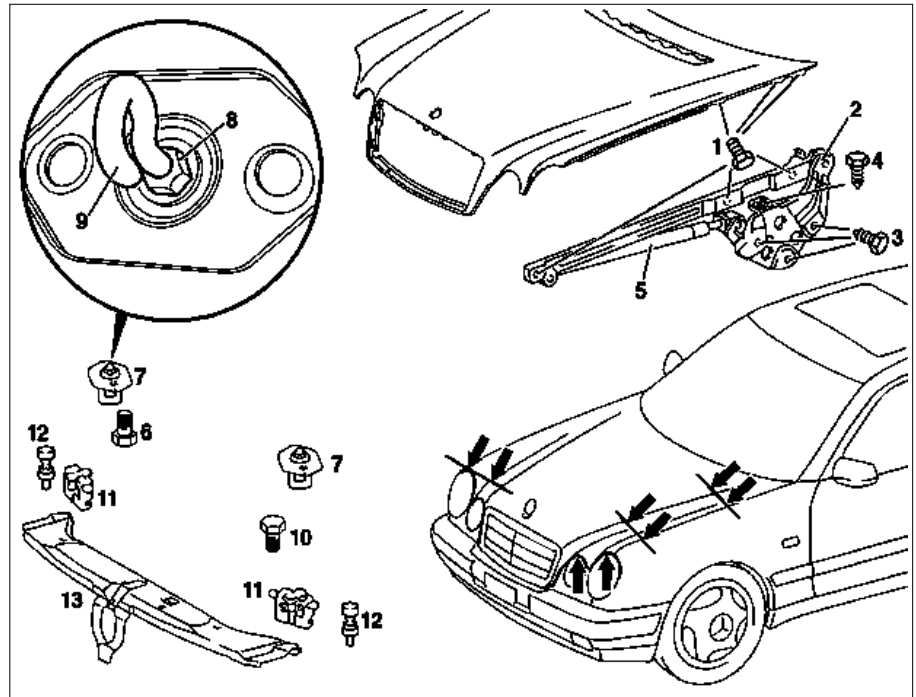


## MODEL 210

- 1 Bolt for engine hood
- 2 Engine hood hinge
- 3 Bolt for hood hinge
- 4 Bolt for engine hood hinge/fender
- 5 Gas-operated strut
- 6 Bolt for engine hood catch upper section
- 7 Engine hood catch upper section
- 8 Adjusting nut
- 9 Bracket for engine hood catch upper section
- 10 Bolt for engine hood catch
- 11 Engine hood catch
- 12 Stop buffer
- 13 Radiator crossmember



P88.40-0245-06

	Adjust in longitudinal and transverse direction and adjust height		
1	Open engine hood		AR88.40-P-1000F
2	Loosen bolts (6) from engine hood catch upper section (7)	Do not twist bracket for upper engine hood catch section (7); adjust with adjustment nut (8)	
3	Loosen bolts (1) from engine hood hinge and adjust engine hood so that it fits optimally with fender and headlamp	 Gaps on hoods, doors and lids ↓ Model 210.0 Model 210.2  For larger adjustment: See steps 5 to 8	*BA88.40-P-1001-01A  AR60.00-P-0700-01F AR60.00-P-0700-01FA *129589032100
4	Tighten bolts (1)		*BA88.40-P-1001-01A
5	Remove gas-operated strut (5)	<b>Danger!</b> Remove gas-operated strut only when engine hood is positioned vertically	AR88.40-P-3060F
6	Loosen bolts (3 and 4) from engine hood hinge and adjust engine hood as described in step 3.	 To loosen bolts (3) remove fender liner	*BA88.40-P-1002-01A
7	Tighten bolts (3 and 4).		*BA88.40-P-1002-01A
8	Install gas-operated strut (5)		AR88.40-P-3060F
9	Lightly tighten bolts (6) on engine hood catch upper section (7) and center by closing the engine hood catch upper section in the engine hood catch		
10	Tighten bolts (6)		*BA88.40-P-1004-01A
11	Loosen stop buffer (12) and turn approx. 2 turns		
12	Adjust height of bracket (9) for engine hood catch upper section by turning adjustment nut so that engine hood is flush with front fenders	 Do not rotate bracket (9), can only be adjusted with adjustment nut (8) Gap dimensions at hoods, doors and covers ↓ Model 210.0 Model 210.2	*129589032100  AR60.00-P-0700-01F AR60.00-P-0700-01FA
13	Adjust height of stop buffers (12) so that they make contact when the engine hood is adjusted and closed		
14	Tighten stop buffer (12)		

15	Check whether engine hood catch catches properly by closing engine hood and pulling upward with a jerk.		
16	Release engine hood and ensure that safety hook catches on radiator crossmember		
17	Close engine hood		AR88.40-P-1000F

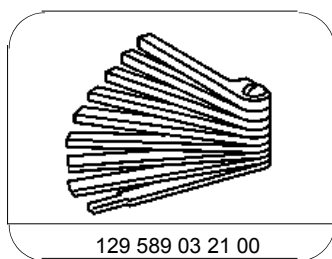
### Test and adjustment values, gap dimensions at hoods, doors and covers

Number	Designation	Model 210.0	Model 210.2
BE60.00-P-1001-01A	Gap dimension Engine hood to fender	Dimension "A" mm	4.0 (±0.5)
	Engine hood to headlamp	Dimension "R" mm	-
	Engine hood to radiator grille	Dimension "O" mm	-
	Radiator grill to headlamp	Dimension "N" mm	-
	Fig., see		AR60.00-P-0700-01F
			AR60.00-P-0700-01FA

### Engine hood

Number	Designation	Model 210
BA88.40-P-1001-01A	Bolt on engine hood	Nm 10
BA88.40-P-1002-01A	Nuts on hood hinge	Nm 10
BA88.40-P-1004-01A	Bolt, engine hood catch upper section	Nm 10

### Special tools

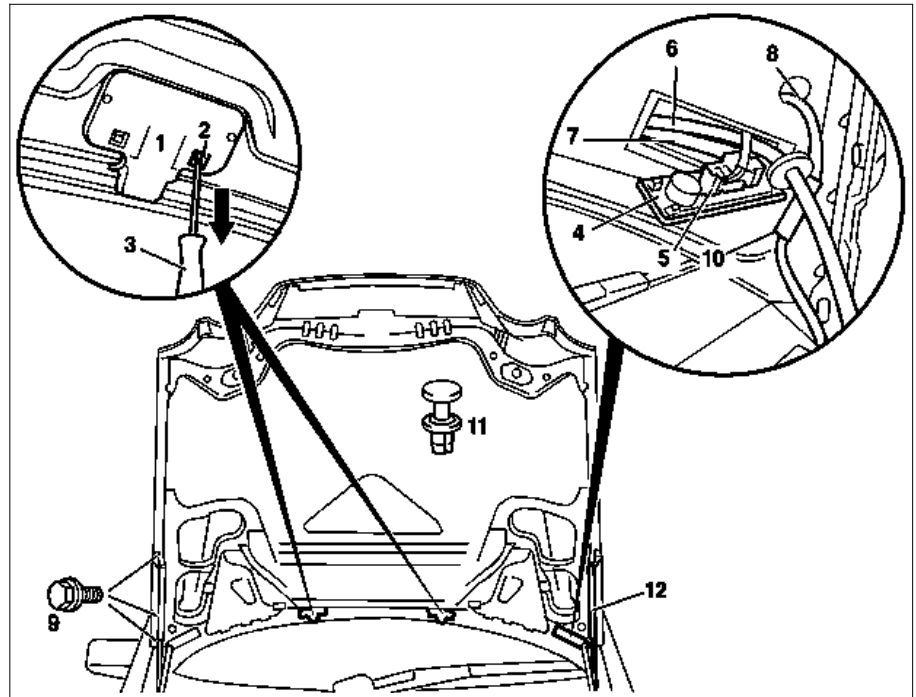


129 589 03 21 00

Feeler gage

## MODEL 210

- 1 Windshield washer nozzles
- 2 Retainer
- 3 Special tool
- 4 Cover
- 5 Connectors
- 6 Water hose
- 7 Cable
- 8 Cable
- 9 Screws
- 10 Cable clips
- 11 Insulating mat clips
- 12 Gas-operated strut

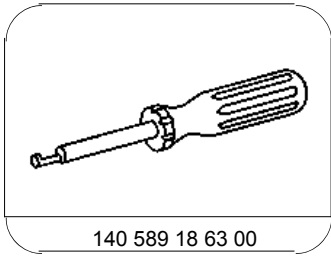


P88.40-0239-06

	Removal, installation		
1	Move engine hood to upright position		AR88.40-P-1000F
2	Place protective fender covers on fender		
3	Remove windshield washer nozzles (1) by pulling out retainer (2), pull off water hose and connector		*140589186300
4	Unclip cover (4) and disconnect connector (5)		
5	Pull out cable (8) and unclip cable clips (10)		Replace damaged clips
6	Pull water hose (6) out of engine hood together with cable (7)		
7	Mark installation position of engine hood on engine hood hinges		This facilitates installation
8	Unscrew screws (9) on engine hood	 	*BA88.40-P-1001-01A Secure engine hood with 2nd person
	When engine hood is replaced seal joints before painting		
9	Remove engine hood with 2nd person and put down on suitable surface	 	Avoid damaging paint <b>Installation:</b> When installing pay attention to correct fit, if necessary adjust engine hood
10	Reinstall in opposite order		AR88.40-P-3020F

## Engine hood

Number	Designation	Model 210
BA88.40-P-1001-01A	Screw on engine hood	Nm 10



140 589 18 63 00

Puller hook